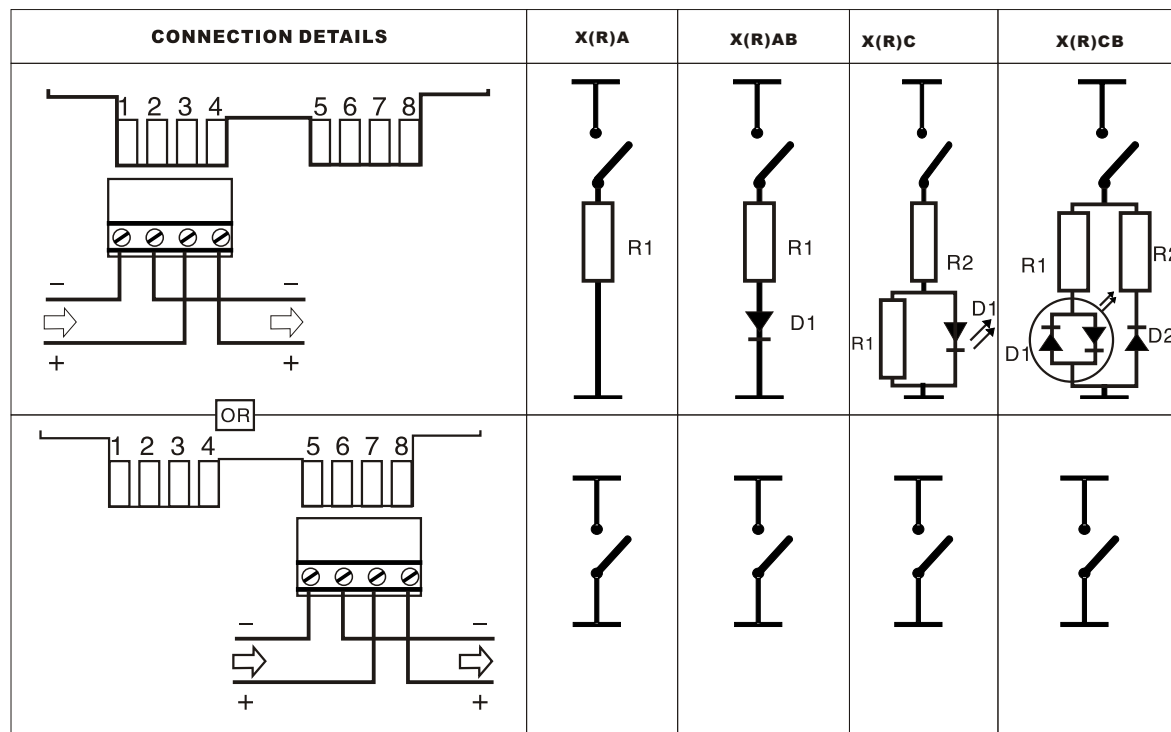


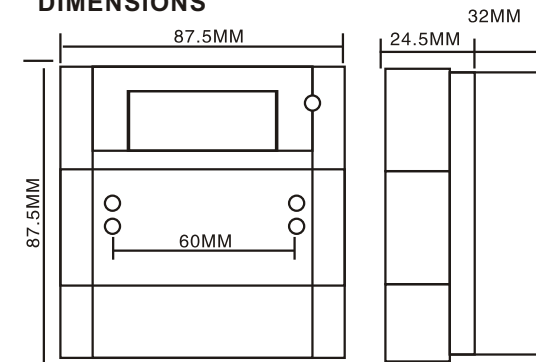
# INSTALLATION INSTRUCTIONS FOR THE MANUAL CALL POINT



X -- COLOR  
 (R) -- RESISTANCE  
 A,C,D,L,S,T -- RELAY OUTPUT  
 E.G.: R470A = X,RED, 470R,  
 transparent cover optional

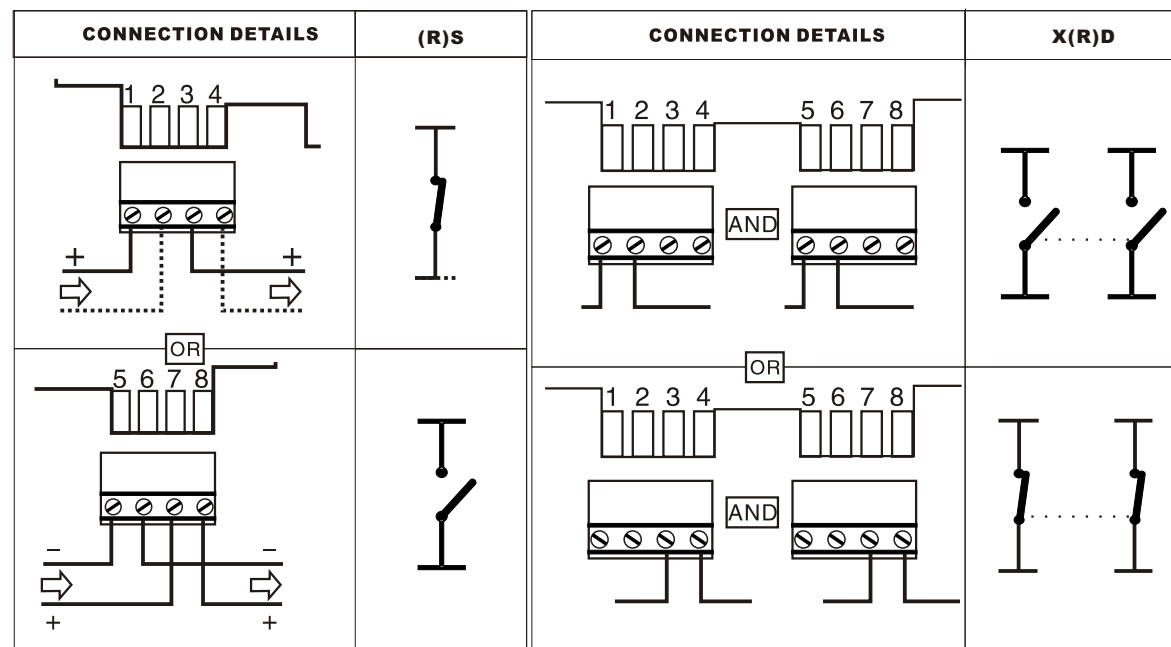
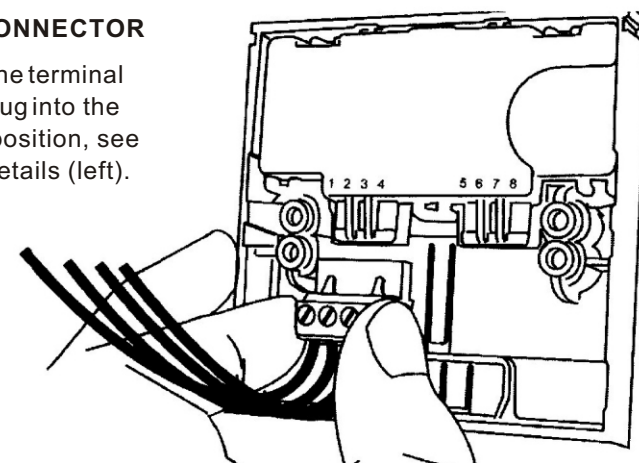
RELAY OUTPUT	A	SINGLE POLE, WITH RESISTANCE
	C	SINGLE POLE, WITH RESISTANCE, WITH LED, WITH ADDRESS CODE
	D	D.P.D.T
	L	LED; SINGLE POLE, WITH RESISTANCE, WITH LED
	S	SINGLE POLE
	T	TRIPLE POLE

## DIMENSIONS



## PUSH FIT CONNECTOR

After wiring the terminal connector, plug into the appropriate position, see connection details (left).



## TECHNICAL DATA



30VDC Max



2A Max



IP24D



110/160g



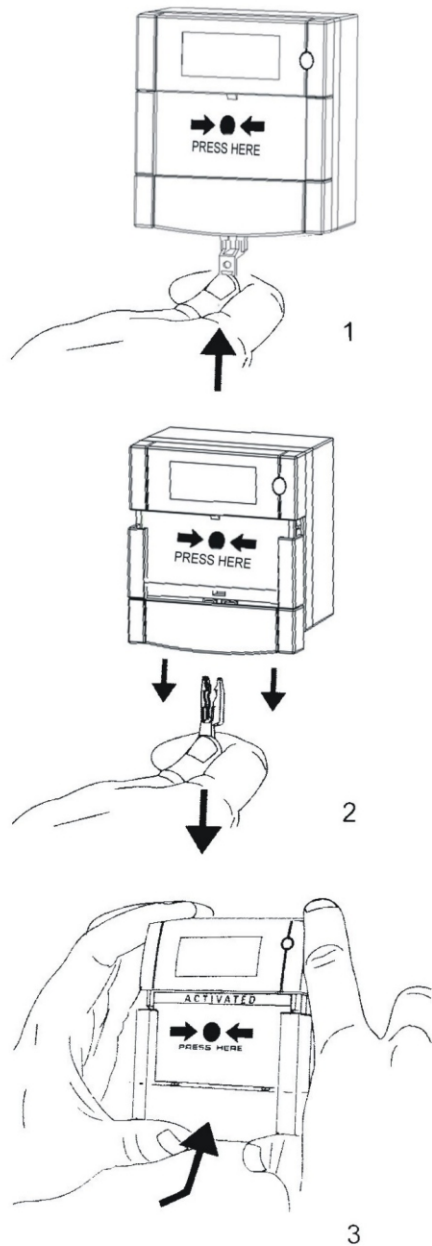
-30°C to 70°C



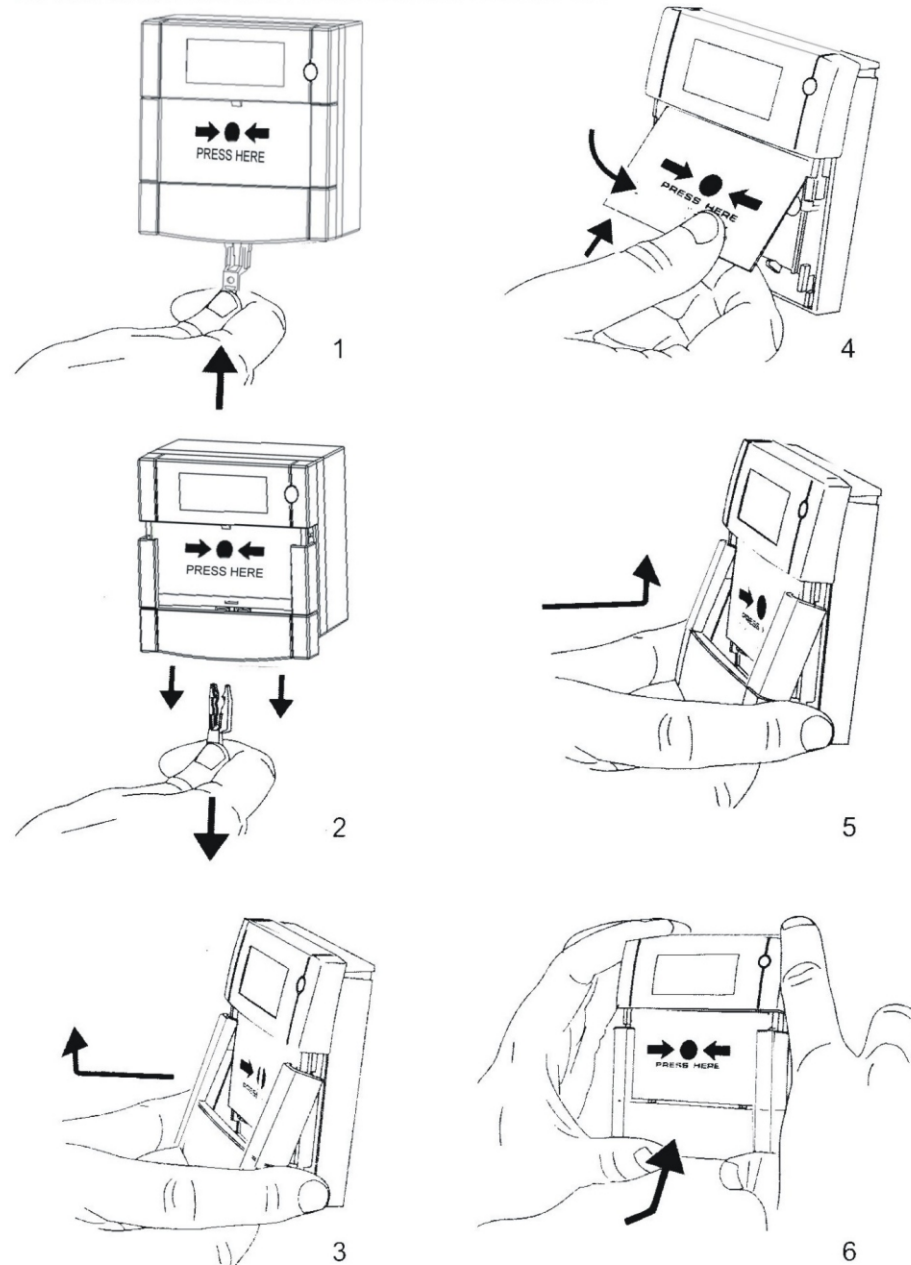
Red, Ral 3001  
 Yellow, Ral 1006  
 Green, Ral 6016  
 White, Ral 9010  
 Blue, Ral 5002

# INSTALLATION INSTRUCTIONS FOR THE MANUAL CALL POINT

## TO TEST



## TO REPLACE GLASS / RESETTABLE ELEMENT



## TO RESET

